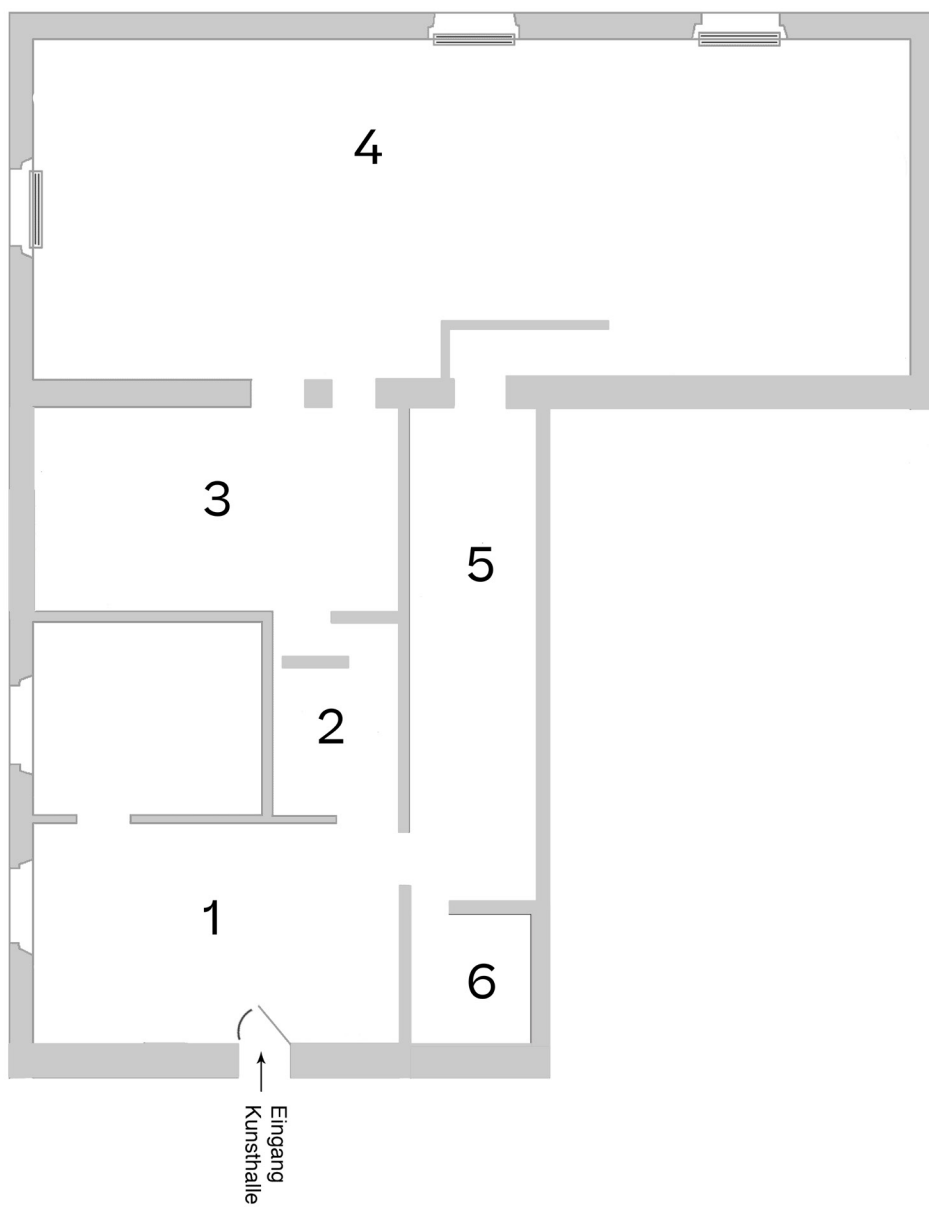


Livia Rita

Eat My Anger
Kunsthalle Palazzo
10 May - 29 June 2025



Livia Rita creates new connections by bridging genre boundaries. She is a performer, singer and visual artist. For the exhibition at the Kunsthalle Palazzo, Livia Rita is working together with the artist collective “Avantgardeners”, which she founded. In the Swiss Alps, on the Bündner Rigi, the collective has created its own refuge and creative laboratory. Themes that occupy Livia Rita are gender fluidity, ecological awareness, breaking down genre boundaries in art, the connection between humans and nature and the exploration of mythological figures and their traditional stories. Livia Rita has created an extraordinary world in the Kunsthalle Palazzo, in which each exhibition space is dedicated to a specific theme.

ROOM 1

LIVING ROOM

The first room is the entrance to the world of Livia Rita. You can choose a character from six cards. You will receive an elixir to drink with this character. This drink has been created for the exhibition using mountain herbs from the Bündner Rigi.

Art fashion costumes hang and lie on the wall and on the floor. These are garments in between fashion and visual art. They are made from a wide variety of fabrics in combination with materials such as latex, sand and pearls and reflect the endeavor to merge nature and humans in the form of fashion. They are worn and brought to life by Livia Rita and the Avantgardeners at performances and concerts.

ROOM 1

LIVING ROOM

Livia Rita collected the last of the snow on the Bündner Rigi and poured hot wax over it. New objects emerged from the moment when cold and hot met. The result is reminiscent of lava, a lunar landscape, fragments of an extinct planet. In these times of climate crisis, when snow is becoming rarer, the gesture is like a silent protocol of disappearance.

From the first room to the second room, flowers lead us in a state of suspension. Embedded in silicone - delicate, almost weightless. The different shapes and colors merge into shimmering ornaments. These are flowers from the alpine world, complemented by locally sourced blooms from a flower shop in Liestal. Plucked and pressed between pages of art books, the leaves are meditatively laid out to form flower carpets. The colors of the individual blossoms create a richly contrasting interplay.

ROOM 2

META- MOR- PHOSE

The second room opens up like a transition. “Metamorphosis” is an ancient Greek term meaning transformation. A piece of clothing, worn by the artist Livia Rita during the performance at the opening, can be seen. The “Art Fashion” has been stripped off and is witness to a former transformation.

ROOM 3

PRO- JEC- TION ROOM

A video recorded with a drone in the Zentralwäscherei Zurich on May 3, 2025 can be seen on the wall. 20 performers from the Avantgardener Studio present themselves as the “Creature Family” in Art Fashion costumes designed by Livia Rita. Borrowing from the world of mythology and fantasy, Livia Rita has developed a new iconography, her own language of figures, colors and materials.

ROOMS 4 TO 6

SPAC- ES OF CREA- TURES

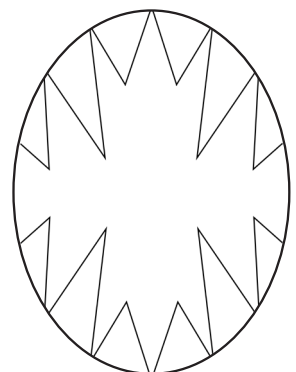
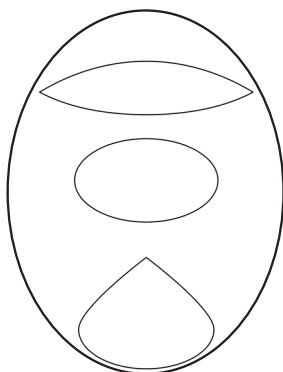
In rooms 4 to 6, you can immerse yourself in six different worlds of the six characters: Dream Soft, Eat My Anger, Into Swamp, Our Hell, Dangerous Thoughts and Icicle. Each character is assigned a fragrance essence, which can be sprayed by visitors, and a soundscape. The worlds flow into one another, sounds and scents overlap. It is an experience that appeals to all the senses.

ROOM 4

DREAM SOFT

EAT MY ANGER

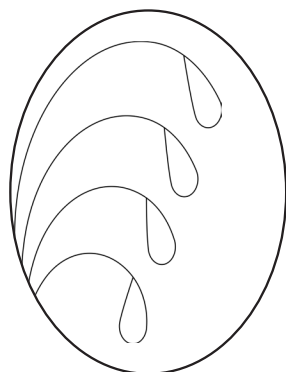
Through the left-hand passageway, we enter a corridor formed by silicone and latex sheets. The light penetrates through the skins and shimmers through. The membranes react as we pass by - they move slightly, as if they were breathing. The works are kept in different colors. At the beginning they are rather white and discreet in relation to the creature “Dream Soft”, then increasingly red, fibrous and fleshy. This is where the realm of the creature “Eat My Anger” begins.



ROOM 4

INTO SWA -MP

We are greeted by the monumental moss figure “Into Swamp”. Its moss dress comes from the area around the Bündner Rigi and was collected by the artist collective Avantgardeners and applied to the figure here on site over a long period of time. The creature looks like nature brought to life and set in motion, manifesting itself in the form of a giant. The scent of the moss is perceptible on approach, so that the atmosphere of a mystical forest and its essence is transferred into the exhibition space.



ROOM 4

OUR HELL

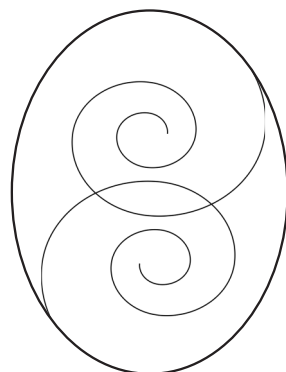
Pieces covered in earth and sand hang on the wall behind the moss figure. These materials form a furrowed and cracked landscape, a face with animalistic, almost diabolical features. Large spiral-shaped eyes seem to hypnotize us. Accompanied by the creature “Our Hell”, we go underground towards the underworld.



ROOM 5

DAN- GER- OUS THOU- GHTS

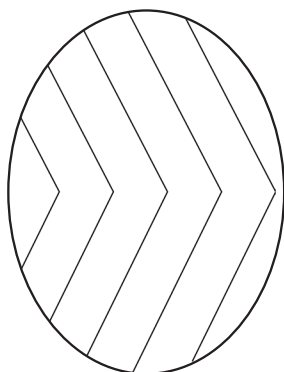
The long exhibition room lets us step into a shower of metal. Pieces of metal cut into various shapes hang from the ceiling and reflect the overhead light. In between, various Art Fashion Costumes hang on the walls. Shoes embroidered with countless beads are also part of this glittering and shimmering world. This shiny environment is inhabited by the creature “Dangerous Thoughts”.



ROOM 6

ICICLE

In the smallest exhibition room, the world of the creature “Icicle” is revealed to us. On the floor is a polygonal water basin with a stone in the middle. This stone island offers the possibility for one person to enter the room. A delicately shimmering meshwork winds along the walls. An organically shaped body with the finest skin drawings hangs from the ceiling. Water in gaseous, liquid or solid form is the element of the creature “Icicle”.



PRO- GRA- M

Opening
Livia Rita. Eat My
Anger

Fri, 9 May 2025, 6 - 9 p.m.
7 p.m.: Performance with
Livia Rita

Guided tours with
the curators

14 & 23 May /
4, 13 & 27 June 2025
each at 3 p.m.

Performance:
Creature
Procession from
Soft Space to
Kunsthalle Palazzo

Sat, 21 June 2025
Start: Soft Space,
Clarastrasse 50, Basel,
4 p.m.

Finissage
Livia Rita. Eat My
Anger

Sun, 29 June 2025,
1 - 5 p.m.
3 p.m.: Performance with
Livia Rita

The exhibition was curated by
Michael Babics and Olivia Jenni
Art Handling: Jonny Maurice
Reception: Robin Falter and Livia Töngi

A big thank you for your help with the exhibition goes to

Avantgardeners Studio
(crafting witches on the mountain):
Emma Lobina, Sherry Shayan, Celine Caly, Anne Claudel, Lacy Barry,
Lukas Treiber, Sara Alvarado, Laura Stellacci,
Honor Bathurst, Ellora Prior

Tea, syrup & essences: Anne Claudel

Opening - dancers: Harumi Mumenthaler, Ilaria Rabagliati

Sound:
Alon Ben, Tom McLuckie
Basic material mainly from live concerts by Livia Rita with Benjamin
Gaschen, Leander Albin, Alex Catlin Freytag, Paul Grimshaw, Abican

Avantgardeners Productions:
Stephanie Cavalcanti, Ellora Prior, Pia Zeitzen

Video:
Creature Community in the Zentralwäscherei 2025, Zurich:
Elisabeth Mulenga, Ilaria Rabagliati, Tasha Hess-Neustadt, Zara Sands,
Anna Rial, Ice Wong Kei Suet, Irène Wernli, Léna Monnereau, Priszilla
Medrano, Sagil Ilyas Md. Amin, Zoé Hammer, Lola Crosina Caballero,
Bettina Zumstein, Fabienne Müller, Laila Blessano,
Olive Dell'Ava, Zoe Bürchler, Ladina Gebert
filmed by Celine Caly

The exhibition is generously supported by:
Kulturförderung Kanton Basel-Landschaft
Ernst Göhner Stiftung
BLKB Stiftung Kultur & Bildung
Kulturförderung Kanton Zürich
Stadt Liestal

Contact

Kunsthalle Palazzo | Poststrasse 2 | 1st floor
P.O. Box 556 | CH-4410 Liestal
Tel +41 (0) 61 921 50 62
kunsthalle@palazzo.ch | www.palazzo.ch

Opening hours:

Wed - Fri : 2 - 6 p.m. | Sat - Sun : 1 - 5 p.m.